

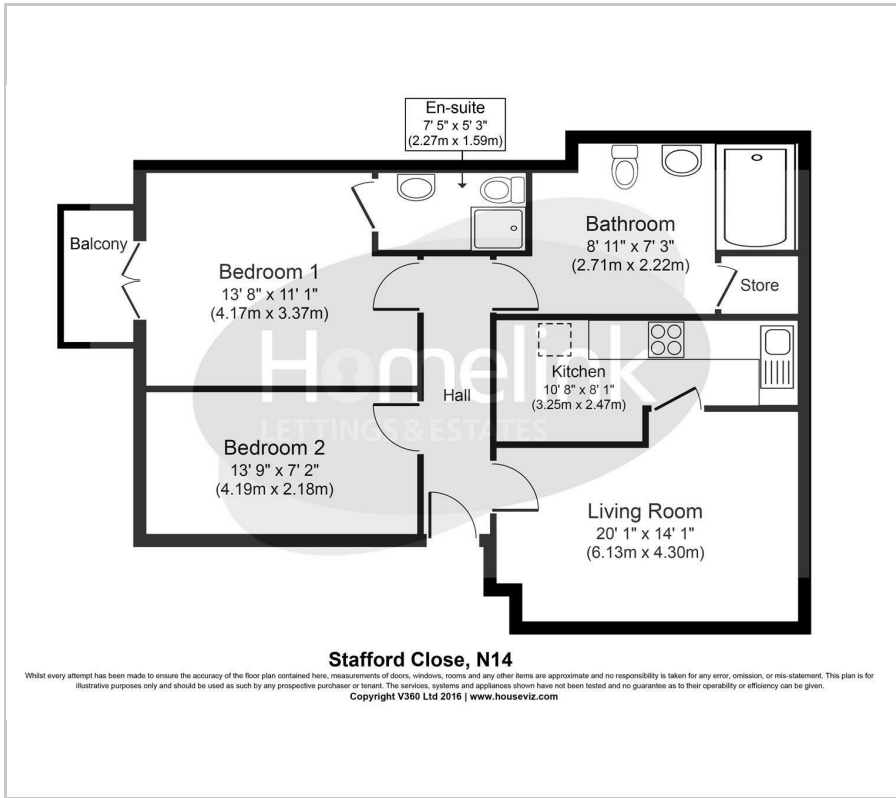


Woodville Court, Stafford Close, Oakwood, N14

£1,950 PCM

2 2 1 C

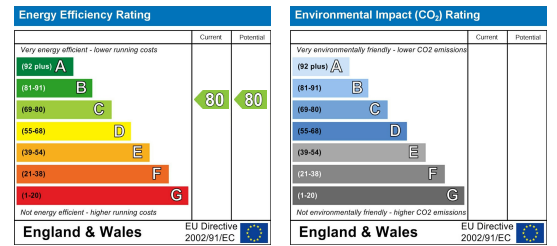
## Floor Plan



## Area Map



## Energy Efficiency Graph



## Viewing

Please contact our Homelink Lettings & Estates Office on 0208 882 2112 if you wish to arrange a viewing appointment for this property or require further information.

- Two Double Bedrooms
- Large & Bright Lounge/Dining
- Gas C/Heating
- Close to Oakwood Underground
- Council tax band - E
- Two Bathrooms inc. en-suite
- Fully Fitted kitchen + White Goods
- Allocated Parking
- Ideal for Family
- Enfield council - 26/27 - £2,771.60



Homelink offer for rent this well beautifully renovated and spacious second (top) floor apartment which is located within a gated development and is less than 0.25 miles to Oakwood underground station.

Offering two double bedrooms, two bathrooms (one en-suite), the property has lovely bright and spacious rooms, large reception/dining room and a well fitted kitchen with full size white goods including dishwasher. The property further benefits from double glazing and gas central heating the apartment also has secure entry phone access, allocated parking space and there are also additional visitor parking bays.

Situated just a short walk to local shopping amenities, parks, schools and Oakwood Underground (Piccadilly line, zone 5) and bus stations. There are also good road links.

To arrange a viewing, call and speak to one of our friendly lettings team. Viewing highly recommended.

Council tax band - E - Enfield council - 26/27 - £2,771.60



These particulars, whilst believed to be accurate are set out as a general outline only for guidance and do not constitute any part of an offer or contract. Intending purchasers should not rely on them as statements of representation of fact, but must satisfy themselves by inspection or otherwise as to their accuracy. No person in this firm's employment has the authority to make or give any representation or warranty in respect of the property.

Homelink Lettings and Estates  
62 Chase Side, London N14 5PA  
0208 882 2112 [homelink.co.uk](http://homelink.co.uk)

